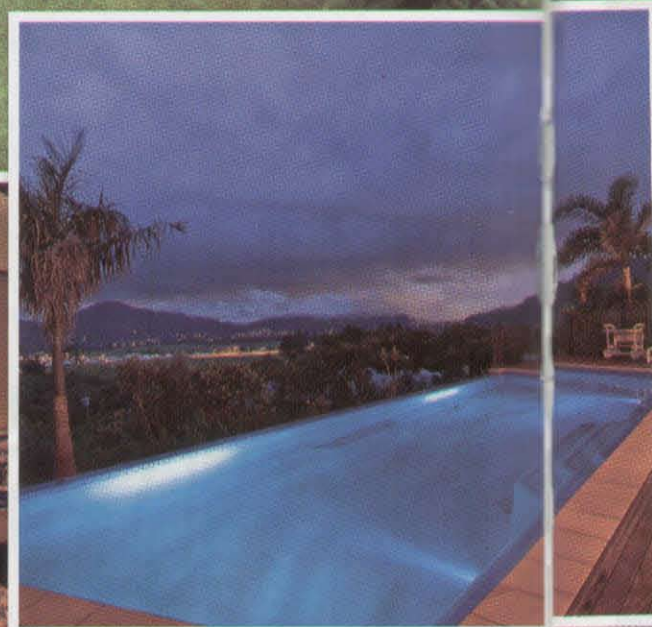
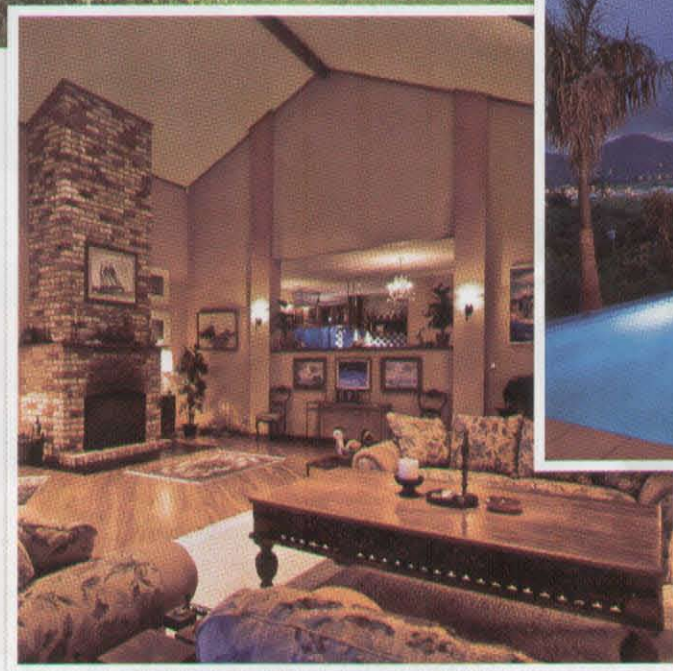


# Beyond Your Imagination

Harvey Rd \$2m  
Redlynch  
Reduced Dec 2008 \$1.75m

Imagine your own private oasis in the foothills of Redlynch, complete with tropical landscaped gardens, stunning views across the valley and a living space bigger than your average house block. **LIANNE BROWN** lets her imagination run wild as she explores every corner of this meticulously planned home.



There is a warmth to this property you wouldn't expect of something of this scale. Set within two acres of lush, tropical gardens, the house has 628 square metres under roof and a character all of its own. Designed by its current owner six years ago, the property features three bedrooms, two bathrooms and plenty of living space in between.

Every aspect of the property is inviting; from the moment you drive through its electric gates with security camera, up the driveway that circles the front of the house, past the powered double shed and to the front door. The sounds of nature whisper as you walk through the modest entrance, flanked by manicured gardens and a fishpond. Inside, warm tones of crimson wall paint, graduating into an earthy orange are broken by an array of wooden and glass louvres that line the lengthy hallways.

Taking pride of place in the centre of the house is the sunken lounge area with its eight metre high cathedral ceilings, open fireplace and glass concertina doors, which open to the entertainment area. From here the views can be seen over the 12-metre wet-wall designer swimming pool. Below there is about 2000 square metres of fully cleared land ideal for an annexe, horse paddock or tennis court.

Back inside, the kitchen leaves nothing to be desired with any keen chef sure to delight at the offerings in this large space. A walk in pantry, tens of metres of bench space, stainless steel appliances and a view to die for will make it one of the most popular rooms in the house.

Outside, the verandah encompasses one entire side of the house from the kitchen, around past the living room and over to the private living area. A wet bar comes off the TV and entertainment room, giving pool goers access to a kitchen, fridge and an outside toilet.

This wing of the house features the spacious master bedroom with its humidified walk in robe, air conditioning, private patio and spa bathroom. Book worms will enjoy the massive neighbouring library with floor to ceiling handcrafted bookshelves, glass display cabinets and inbuilt chart table.

In the southern wing are two large air-conditioned bedrooms that share a large double bathroom and verandah, ensuring privacy for your guests and of course, yourself. The long hallway provides plenty of space for decorative pieces such as bookshelves and your favourite art collection.

At the end of the southern wing is a sizeable double garage with electric panel door, big air-conditioned storeroom (great for a wine cellar), large internal laundry with separate shower and more shelving space.

To ensure your security in such a spacious home, a full alarm system has been installed and is operated via a touch screen monitor in the foyer of the house. The panel allows you to dim the lights in any room of the house, including the external floodlights, activate and de-activate the alarm system and view who is calling at the front security gates. There is also a 'panic button' in the master bedroom, which allows you to activate all the lights on the property should you fear an intruder.

For your living comfort there are three hot water systems and an in-wall vacuum cleaning system that means no sore backs from lugging around a vacuum cleaner, which would suit me just fine.

All this and you are just minutes away from a major shopping centre, schools and cafes. But don't just take my word for it, treat yourself to a look and let your own imagination run wild. CL

For an inspection call Grant Freeman (Local 07 4055 3278, 0417 159 357 International +617 4055 3278, +614 1715 9357) from Prestige Property Specialists (The luxury division of Premium Property Specialists) [http://prestigepropertyspecialists.com.au/search\\_pps.php?q=205](http://prestigepropertyspecialists.com.au/search_pps.php?q=205)