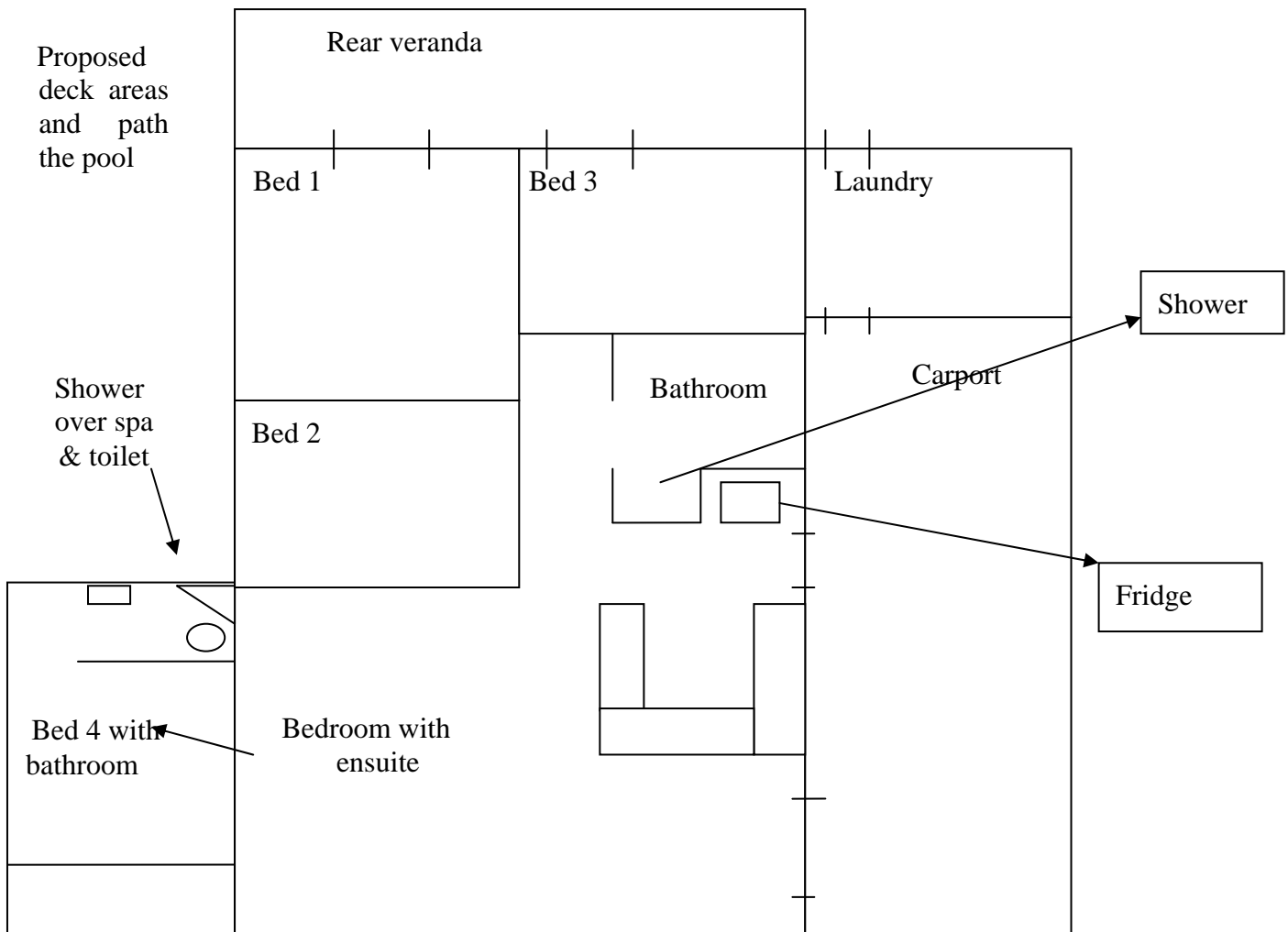


7 Lambus St, Palm Cove (not to scale).



- Lounge and bedrooms 1 to 3 are all air-conditioned with Fijitsu
- Kitchen in reconstituted granite
- Block size is approx 700 sq m

Extension

- The extension is structurally completed
- The spa is in place
- The base plumbing is complete, i.e. connection to sewerage and pipes in walls and foundations.
- Wiring in walls ready to fit off
- Required is to fit toilet, tile, supply & fit vanity, fit of plumbing and wiring.
- The spa is a corner spa with a heat pump, all fittings will go with the sale
- We have purchased tiles for the extra extension which will also go with the sale.
- The wall that separates the bedroom from the ensuite does not go the roof, i.e. open plan